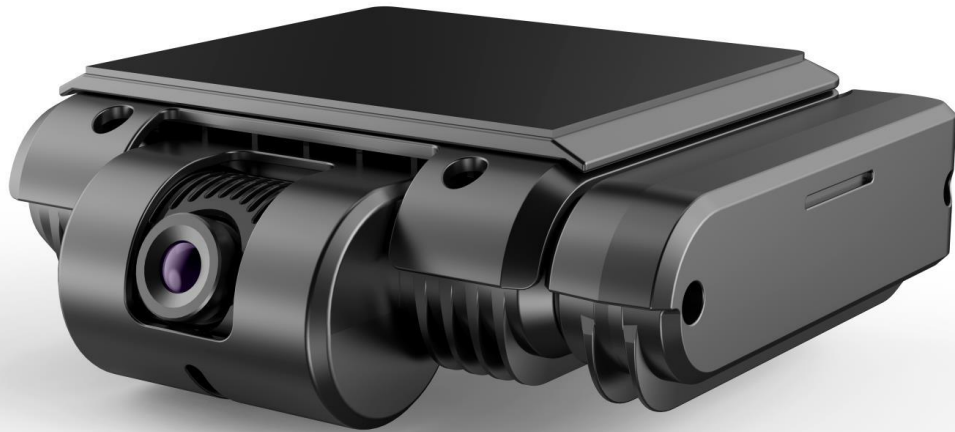


C6D AI



Overview

Streamax C6D AI is an advanced dash camera with a built in AI processor to detect driving events such as lane departure, forward collision, and driver behavior such as fatigue, distraction, smoking, and phone call usage.

The C6D AI can alert the driver in real-time of dangerous behaviors, and upload events to a monitoring platform to be reviewed by a fleet manager to aid them in coaching the drivers to reduce risk.

Highlight

- Support up to 3 channels of video recording
- Built in AI event detection with ADAS and DSM¹ capabilities
- Harsh driving detection with 6-axis G sensor (Harsh Acceleration, Deceleration & Sharp Turn)
- Real-time in-cab feedback
- Dual SD card storage with dual stream recording (HD and SD Recording)
- Built in Bluetooth, Wi-Fi & LTE modules^{2,3}
- Supports live streaming, video playback, and event upload

1. Requires Optional DSM Camera

2. Available Module Selection Quectel EC25-AF, EC25-EC & EC25-AU

3. EC25-AF Model is FCC ID, PTCRB & AT&T Certified

Active Safety Features

Streamax C6D AI utilizes Machine Vision based Video Analytic technology to automatically capture road dangers and unsafe driving behaviors. Detected events will trigger an audio and visual notification to alert the driver in real time, event recordings will be uploaded to the cloud simultaneously.

ADAS Features



FCW



HMW



LDW



PCW



SPEED SIGN¹



STOP SIGN¹

DSM Features³



DRIVER
FATIGUE



PHONE



DRIVER
DISTRACTION



SMOKING



FACIAL
RECOGNITION²



SEATBELT²

Optional Accessories for Active Safety Features



DSM Camera (CL29M)



Driver Notifier (R-Watch)

1. US Sign Recognition Only, Expected release date December 31, 2020
2. Expected release date July 1, 2020
3. Requires Optional DSM Camera

Specifications

Product model	
	C6D AI
Network	
WIFI	Support
Bluetooth	Support
3G/4G	Support
Positioning	
GPS	Support
Sensor	
6-axis sensor	Support
Engine Data Interface	
CAN data collection	Support
LED Status	
	<p>The indicator can show four different device states:</p> <p>Power on: the red light flashes after the device is powered on;</p> <p>Normal operation: green light flashes</p> <p>Failure alarm: red light flashes once every second.</p> <p>Upgrading: the indicator flashes twice every second</p>
Storage	
SD card	Dual SD card slot, support SDXC 64G/128G/256G and hot swap
Audio & video	
Video recording	3 channels of video recording
Resolution and frame rate of primary stream	ADAS: 1080P@30fps DSM: 960P@30fps
Total resource	Primary stream 1080P@30fps+960P@30fps+720P@30fps, 3-channel sub-stream CIF@15fps
Image settings	Brightness, chroma, contrast, color saturation and sharpness adjustment

Video coding	H.264/H.265
Audio compression standard	ADPCM/G.711
CBR/VBR	Support
Audio input	Support
Built-in speaker	Built-in speaker for broadcasting voice message
Camera parameters	
Sensor types (ADAS)	1/2.9" 2M pixel CMOS Sensor
Shutter speed	1/30s-1/100000s
Lens	4mm
Lens interface types	M12
Wide dynamic range	D-WDR
Backlight compensation	Support
S/N	≥48db
Interface	
RS232	1
RS485	1
IO alarm input	4
IO alarm output	1
CAN Interface	1
Power output	5V DC@500mA, 12V DC@500mA
Protocol	
Network protocol	HTTP, TCP, ARP, UDP, FTP, DHCP, DNS, IPV4, NTP

Product Dimensions (Unit: mm)

